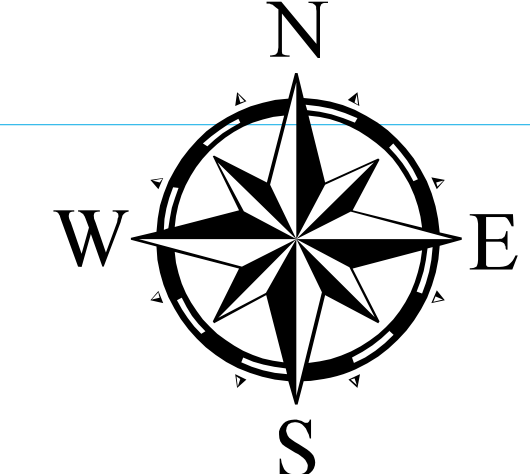
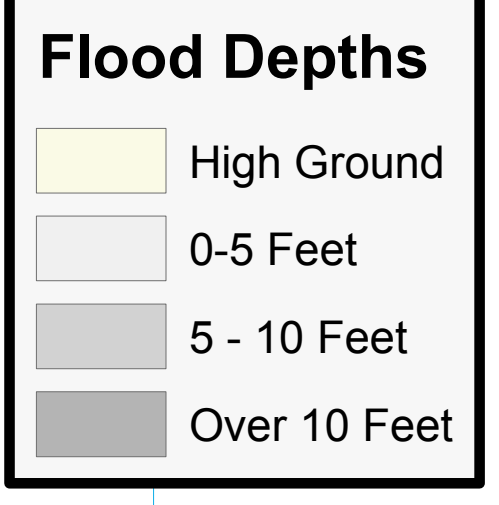


- BUS STAGING AREA
- CARE FACILITY
- CITY LIMITS - STOCKTON
- COMMAND POST
- COMMAND POST - SECONDARY
- CONTOUR LINE AND ELEVATION (FEET)
- CORRECTIONAL FACILITIES
- EMERGENCY BERM
- ENTRY CONTROL
- PASS ISSUANCE POINT
- ENTRY/EXIT CONTROL (STAFFED)
- ENTRY/EXIT CONTROL (UNSTAFFED)
- EVACUATION ROUTE
- FIRE STATION
- HELIPAD
- HELISPOT
- HOSPITAL/SUB-CARE FACILITY
- INGRESS FOR HEAVY EQUIPMENT
- LEVEE
- LEVEE ACCESS
- LOGISTICS
- MEDICAL HELIPAD
- MOBILE RADIO TRANSMITTER SITE
- POLICE STATION
- RALLY POINT
- RALLY POINT (SECONDARY)
- RELIEF CUT
- SCHOOLS
- STAGING AREA
- TRAFFIC LIGHT
- WATER RESCUE LAUNCH
- ZONE BOUNDARIES



COMMUNICATIONS KEY COMMAND AND TACTICAL

Available Frequencies

Stockton Sheriff Services	xxxxxx
Stockton Fire	xxxxxx
Stockton Police	xxxxxx
Stockton EMS	xxxxxx
Stockton Water	xxxxxx
Stockton Public Works	xxxxxx
Stockton Sheriff's Office	xxxxxx
Stockton Fire Department	xxxxxx
Stockton Police Department	xxxxxx
Stockton EMS	xxxxxx
Stockton Water	xxxxxx
Stockton Public Works	xxxxxx
Stockton Sheriff's Office	xxxxxx

Current Assignments

Key Communications Assignments as of	Time	Use
Function	Frequency/Channel	

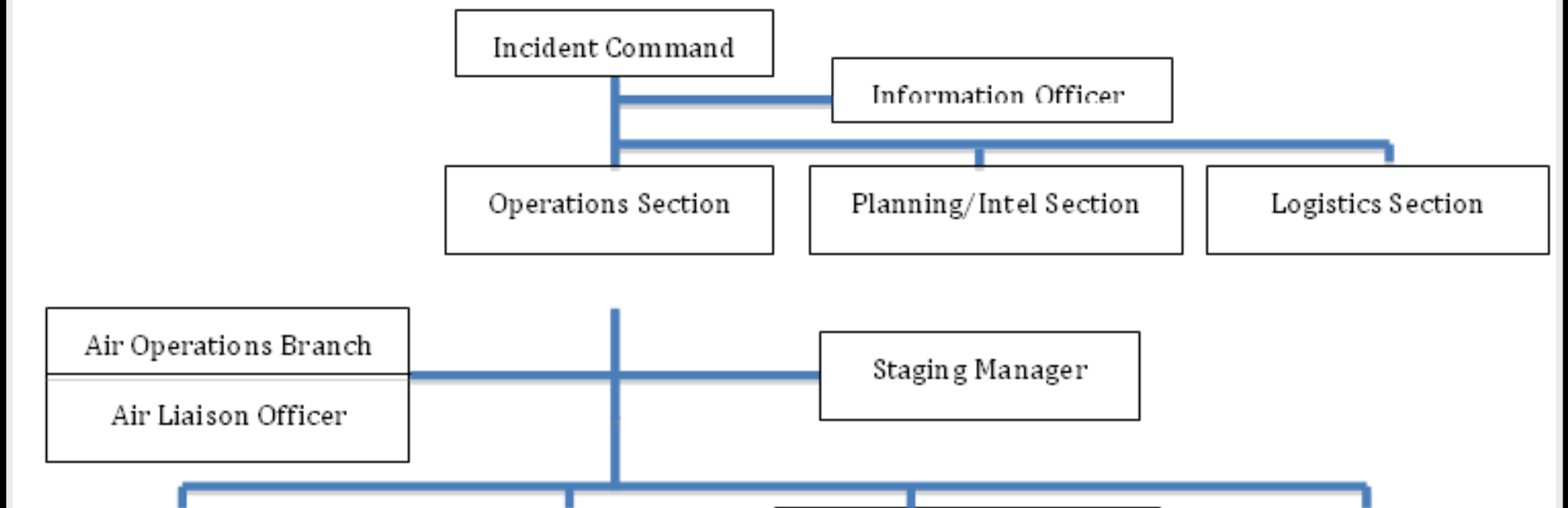
EVACUATION INGRESS CONTROLS

During the evacuation, private individuals with vehicles will want to enter the evacuating zone to help move people or critical material or perform critical tasks. If the situation is not too dangerous this should be encouraged but controlled. The pre-identified passes available at Office of Emergency Services, 2101 E Earhart Avenue, Stockton.

Pass Issuance Points:

Pass Duration Policy:

Other Entry Limitations:



STATE/ FEDERAL SEARCH AND RESCUE RESOURCES AND ASSIGNMENTS

State and Federal search and rescue resources are available through mutual aid. Contact Operational Area Logistics Section at 2101 E. Earhart Avenue

AGENCY	Responding Resource/Designations	Primary Contact/ Emergency
CA Highway Patrol	Air Resource	
U.S. Coast Guard	Air Resource	
Water Resource		
National Guard	Air Resource	
Ground Resource		
Fish and Game	Water Resource	

EMERGENCY BROADCASTS TO PUBLIC

All messages for following three systems are developed by the Joint Information Center (JIC) at the San Joaquin Operational Area Emergency Operations Center:

Emergency Alert System (EAS)
Provides immediate access to commercial radio and TV broadcasters for short messages and instructions. Primary control station is KJRH, 1530 AM. EAS receivers located at San Joaquin Operational Area CEC, Sheriff's Communications Center, and at control station KJRH, 1530 AM.

Telephone Notification Systems (TENS)
Automatic dialing system which telephones a designated geographical area and plays a short recorded message if phone is answered. System control is at the dispatch center of agencies with systems in place.

Stockton Police Department - Stockton coverage and backup for Sheriff San Joaquin County Sheriff - Countywide coverage

Mobile Emergency Advisory Radio System (EARS)
Low power trailer mounted AM radio transmitter for continuous broadcast of moderate length or multiple short messages to public. Good reception up to a 2 mile radius with car radio or 1/2 mile radius standing outside with good portable AM radio. Field Incident Command deploys and secures unit. JIC develops message and programs by telephone or as site. Three (3) units are immediately available.

Stockton Unit - 530 AM or 1300 AM
SJC Unit - 530 AM or 1300 AM

Radio Transmission Sites
TPO-1, Crosstown Fwy and Fresno Av. (S11)
TPO-2, San Joaquin River, north of Stockton Sewer Treatment Plant (S8)

Incident Broadcast Plan
System and Frequency (EARS) Broadcast Location Targeted Area/Subject Matter

MASS CARE SHELTERS AND RECEPTION CENTERS:

Locations of Mass Care Shelters and Reception Centers locations will be provided in the Metropolitan Area Command Incident Action Plan. Shelters to direct evacuees (evacuee may change as initial shelter fill up).

Direction of travel of evacuees once out of the evacuation area will be provided by Metropolitan Area Command Incident Action Plan.

CURRENT SHELTER ASSIGNMENTS FOR PORT ZONE

Direct Evacuees to these shelters as of _____ Time _____ Date _____

RP1:			
RP2:			
RP3:			
RP4:			

DIRECTION OF TRAVEL FOR EVACUEES

Current Assigned Direction of Travel as of _____ Time _____ Date _____

Law Branch(s)	Evacuation Branch(s)	Search & Rescue Branch(s)	Medical Branch(s)
Security Group/Division(s)	Transport Group/Division(s)	Urban S.A.R. Group/Division(s)	Patient Transport Group/Division(s)
Ingress/Egress Control Checkpoints	Acquire, Dispatch, and Track Ground Transport for Evacuation Groups	Rescue trapped persons from structures	Organize EMS Transport and obtain destinations
Traffic Control Group/Division(s)	Assistance Group/Division(s)	Air S.A.R. Support Group/Division(s)	Triage Trauma/ Acute Medical Victims
Traffic Monitoring, Barricade, Traffic Officers	Locate and Move Housebound Handicapped	Support Air Rescues from ground or water locations	Treat and Prepare Victims for Transport
Warning Group/Division(s)	Rally Point Group/Division(s)	Water S.A.R. Group/Division(s)	Treatment Group/Division(s)
Physical Warning in Evacuation Zone	Monitor and Staff Rally Points, Lead Evacuees	Swift Water and Water Rescue Operations	
	Animal Division(s)	Fire S.A.R. Group/Division(s)	
	Rescue and Transport Animals to Holding Area	Rescue from burning structures	
	Institutions Group/Division(s)		
	Assess and Assist Facilities w/ Vulnerable Populations		

SPECIALIZED EVACUATION EQUIPMENT/SUPPLIES

Area Command will allocate specialized equipment/supplies to sector commands.

Equipment/Supply	Quantity	Location
Rally Point Signs	3	DES Supply Containers at CVA
Fueling Attachments to allow bulk fuel trucks to fuel vehicles directly	20	DES Supply Containers at CVA
Mobile Radio Transmitters	3	Manteca Police Department (1) Stockton Fire Department (1) County DES (1)
Pre-Printed Entry Pass	1000+	County DES

TACTICAL FACILITIES

HELISPOTS/HELIPAD

HELIPAD: 121°14'48" W, 37°53'48" N

HELISPOT:

- HPO-1, Crosstown Freeway (S11)
- HPO-2, Hoger Dr., west of Lyons Golf Course (R8)
- HPO-3, Huntington Dr and Camino Av. (D8)
- HPO-4, Ve. Borg Balboa 1465 S Lincoln St. (T13)
- HPO-5, Washington St and Port 15 Rd (S10)
- HPO-6, 121°17'57" W, 37°58'07" N

RESCUE LAUNCH SITE
R.L.S. Manteca Rd and Walker Slough (V13)

LEVEE ACCESS POINTS

- V11, Navy Dr and San Joaquin River (S9)
- V12, Hwy 4 and San Joaquin River (U10)
- V13, Port Park (west end of Eighth St.) (U10)
- V14, Manteca Rd and Walker Slough (V13)

Use box [] to indicate activation of a site.

COMMAND POST AND INITIAL RESOURCE STAGING LOCATIONS

COMMAND POSTS - Primary Evacuation
CVA - City of Stockton Corp. 1465 S Lincoln St. (T13)
CVA-2, Crosstown Freeway and Fresno Ave (S11)

COMMAND POSTS - Secondary (Alternates and Large Facility Evacuations)
Mobile Command Post Call-Out
To activate South County Mobile Command Post call-out, call the Tracy Police Dept. and advise them of the request.

LOGISTICS FACILITY
Logistics Base
LFC-1, Stockton - City Corporation Yard 1465 Lincoln St. (T13)
County DES (1)
Manteca Police Department (1)
Stockton Fire Department (1)
County DES (1)

Bus Staging Areas
B1, Filbert St / Minner Ave. (Stockton) (off map)
B2, Lincoln St / Minner Ave (Stockton) (off map)
B3, San Joaquin Regional Transit has 161 buses
- 42 Passenger coach (seats 12 people and 2 wheelchair)
- 17 MCI Tour buses (50 people and 2 wheelchairs)
- 102 buses (45 people and 2 wheelchairs)

SPECIAL CONSIDERATION
Planning Considerations for Flood Flood Operations

LEVEE PATROL (ALL SECTORS)
Reclamation District vehicles will conduct ongoing, periodic, levee patrols along the tops of levees on San Joaquin River and French Camp Slough. Vehicles will access levee at access points shown on map.
- Provide for access through control points and keep levee tops clear.

EMERGENCY WORK
Heavy vehicles may need access to any part of levee during evacuation and security operations to perform emergency work.
- Identify ingress/egress routes for heavy equipment with RD 454 officials.

RD17 RELIEF CUT
In the event of levee failure or flooding from the East, a relief cut will be made which includes on ramp. Expect heavy destruction of structures within 1/4 mile of relief cut after it is made from outflow of water. Expedient movement of heavy equipment to relief cut vicinity prior to and/or after levee failure.
- Identify ingress/egress routes for heavy equipment to site while evacuation and staging area at site with RD404 officials.
- High priority to evacuation/rescue from structures within 1/4 mile of cut in event of levee failure.

UNDERPASS EMERGENCY BERM (ALL SECTORS)
In the event of levee failure or flooding from the East, one or more emergency berm may be constructed at Interstate 5 underpasses to contain flood waters. Primary work may be started prior to actual breach.
- Check Metropolitan Area Command for timing of initiating construction of berm.
- Plan for heavy equipment access to berm sites shown on map while evacuation traffic outdoors is in progress.
- Coordinate with Metropolitan Area Command for timing of closing of underpass routes to allow full closure of berm.

TRAFFIC LIGHT LOCATIONS

San Joaquin County
The signal light keys are kept in the Sergeant's Key box at the Sheriff's Operations Center.
Stockton:

TRAFFIC LIGHT LOCATIONS

- Eight St and Laver Rd (U12)
- Eight St and SR-16 (U13)
- Eight St and Fresno Av. (U11)
- Charter WY and Fresno Av. (T11)
- Charter WY and SR-16 (T12)
- Fresno Av and Crosstown Fwy (S11)
- Fresno Av and Washington St (S11)
- Navy Dr and Fresno Av. (T11)
- Fresno Av and Crosstown Fwy (S11)
- Fresno Av and Washington St (S11)

RALLY POINTS FOR PUBLIC

Rally Point Designations and Locations

- RP10, Boggs Tract Park, 533 S Los Angeles Ave. (S11) Secondary
- RP11, Taylor Skills School, 1111 Lower Blvd. (U11)
- RP12, San Joaquin Elementary School, 2020 S Fresno Ave. (U11)
- RP13, Taylor Skills School, 1111 Lower Blvd. (U11)
- RP14, Washington Elementary School, 1735 W Sonoma St. (S11)
- RP15, Lyons Golf Course, 3303 Navy Dr. (R8)

Use box [] to indicate notified and assessed. Date as of 3/15/2010

SCHOOLS

- Marshall Elementary School (K-6)
- San Joaquin Elementary School (K-6)
- 2020 S Fresno Ave. (U11)
- Taylor Skills School (K-6)
- 1111 Lower Blvd. (U11)
- Washington Elementary School (K-6)
- 1735 W Sonoma St. (S11)

Use box [] to indicate notified and assessed. Date as of 3/15/2010

CARE FACILITIES AND GROUP QUARTERS

Child/Infant Care

- Conway Child Care Center, Inc. - Conway
- 742 Dallas Ave. (V12)
- 2183 N. Sierra St. (U11)
- 348 S. Los Angeles Ave. (S11)
- 2020 S Fresno Ave. (U11)
- 1101 Lower Blvd. (U12)
- 1465 Laguna Ct. (U12)
- 1735 W Sonoma St. (S11)

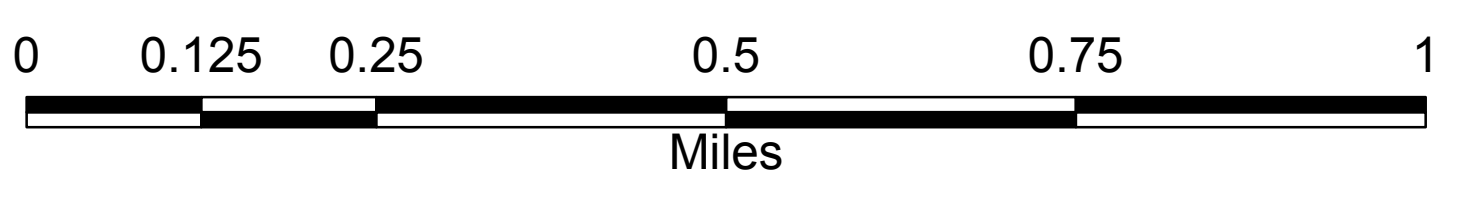
Adult / Elderly Care

- Advent Resident Care Home
- 300 S. Stockton St. (U12)
- Alcor Guest Home
- 2183 N. Sierra St. (U11)
- Avdon Guest Home #2
- 2415 E. 16th St. (U12)
- Avdon Guest Home #3
- 2499 Howe St. (U12)
- Avdon Guest Home #4
- 853 Chicago Ave. (U13)
- Dukey Guest Home #1
- 484 Chicago Ave. (U13)
- Dukey Guest Home #2
- 484 Chicago Ave. (U13)
- Dukey Guest Home #3
- 484 Chicago Ave. (U13)
- Dukey Guest Home #4
- 484 Chicago Ave. (U13)
- E T A Care Home
- 1445 E. 16th St. (U12)
- Estrella Williams Guest Home
- 1465 Laguna Ct. (U12)
- Estrella Williams G. H. #2
- 1826 N. Lincoln St. (U11)
- Golden Haven
- 2024 Levee Blvd. (U12)
- H and R Home Care Facility
- 484 N. 16th St. (U12)
- H and R Home Care Facility #2
- 1111 Lower Blvd. (U11)
- Homebased Care For the Elderly
- 2772 Beech Dr. (U12)
- Homebased Care For the Elderly
- 2020 S Fresno Ave. (U11)
- Homebased Care For the Elderly
- 3200 Diamond Gate St. (S11)
- J and R Massage Home
- 1465 Laguna Ct. (U12)
- JC Care Home
- 1055 Sanchez Ct. (U12)
- Phoebos Care Home
- 1465 Laguna Ct. (U12)
- Res Care Valley Inc
- 301 Laver St. (U11)
- Salvador Care Home
- 3017 Taylor Park St. (U11)
- Tilden Park Res. Home
- 2216 Lincoln St. (U11)
- Willow Care Home
- 1633 Willow Park Wy. (U11)

Group Quarters
NONE

Use box [] to indicate notified and assessed. Date as of 3/15/2010

San Joaquin County Office of Emergency Services Phone: (209) 953-6200
Prepared by San Joaquin County Geographic Information Systems 1810 East Hazelton Avenue, Stockton, CA 95205



Port Evacuation Zone

This map and information is for reference purposes only and is not to be construed or used as a legal document or survey instrument. Any reliance on the information contained herein is at the user's own risk and should be verified by independent analysis. This information is broad-based and for your convenience. This information should not be relied on for decisions related to purchasing or developing land. The County of San Joaquin gives no warranty, express or implied, as to the accuracy, reliability, utility or completeness of this information.