

RESIDENTIAL

- R-R Rural Residential
- R-VL Very Low Density Residential
- R-L Low Density Residential
- R-M Medium Density Residential
- R-MH Medium High Density Residential
- R-H High Density Residential

INDUSTRIAL

- I-L Limited Industrial
- I-G General Industrial
- I-P Industrial Park
- I-W Warehouse Industrial
- I-T Truck Terminal

COMMERCIAL

- C-O Office Commercial
- C-FS Freeway Service Commercial
- C-N Neighborhood Commercial
- C-G General Commercial
- C-C Community Commercial
- C-RS Rural Service Commercial
- C-R Recreation Commercial
- C-L Limited Commercial
- C-X Crossroads Commercial

AGRICULTURAL

- AG-20 General Agriculture
- AG-40 General Agriculture
- AG-80 General Agriculture
- AG-160 General Agriculture
- AL-5 Limited Agriculture
- AL-10 Limited Agriculture
- AU-20 Agriculture Urban Reserve
- AI Agricultural Industrial

BOUNDARIES

- CITY Incorporated Areas
- P-F Public Facilities
- CONDITIONAL ZONING

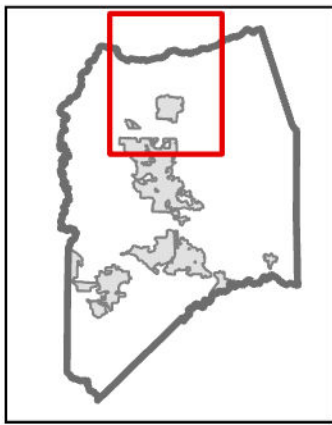
MIXED USE

- M-X Mixed Use
- AP-X Airport Mixed Use

San Joaquin County, CA
LODI

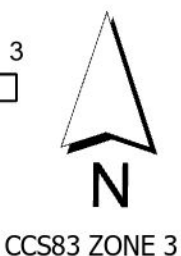
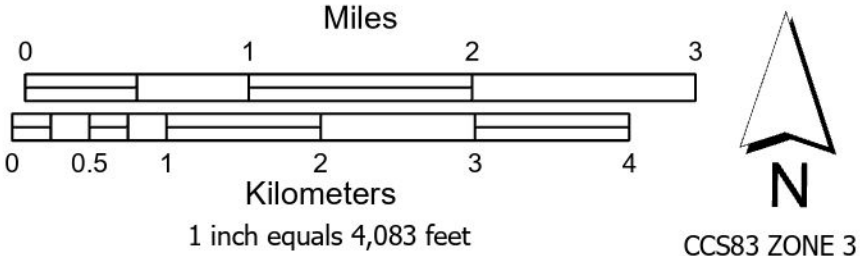
ZONING RECLASSIFICATION

APP NO.	ORDINANCE:	RESOLUTION:	ADOPTED
PA-2100227	4641	R-24-54	03/12/2024
PA-2100261	4639	R-24-25	02/06/2024
PA-2200021	N/A	R-24-115	05/21/2024
PA-2200278	4647	R-24-111	05/21/2024
PA-2300135	4678	R-24-112	05/21/2024
PA-2300143	4659	R-24-216	11/12/2024



San Joaquin County
Geographic Information System

44 N San Joaquin Street Suite 230, Stockton, CA 95202
The information on this map is for general information purposes only. The County of San Joaquin does not warrant its accuracy, completeness or suitability for any particular purpose. The information should not be relied upon without field verification.
County of Sacramento, San Joaquin County GIS/Planning, California State Parks, Esri, TomTom, Garmin, SafeGraph, GeoTechnologies, Inc., METI/NASA, USGS, Bureau of Land Management, EPA, NPS, USDA, USFWS
Printed on 9/16/2025 7:42 AM by bwaddle



ZONING