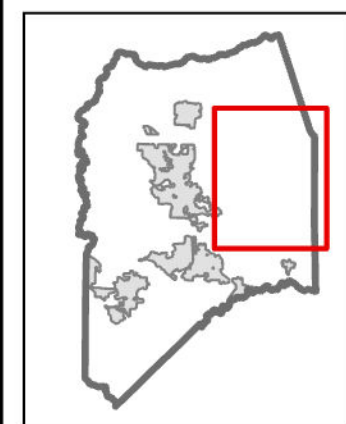


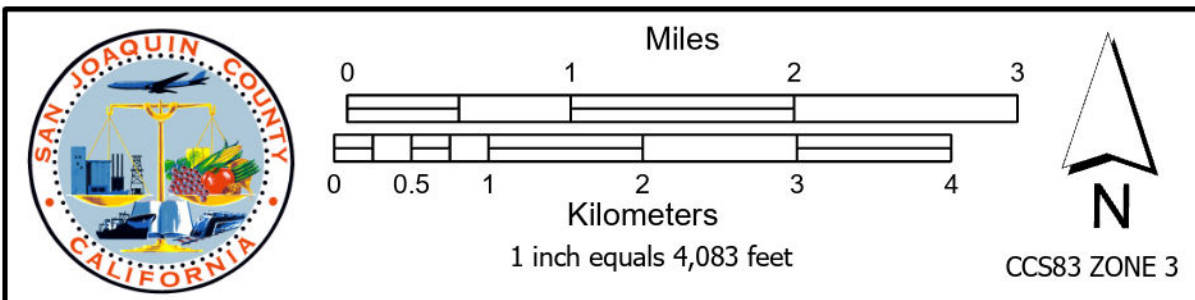
RESIDENTIAL	COMMERCIAL	AGRICULTURAL	BOUNDARIES
R-R Rural Residential	C-O Office Commercial	AG-20 General Agriculture	CITY Incorporated Areas
R-VL Very Low Density Residential	C-FS Freeway Service Commercial	AG-40 General Agriculture	P-F Public Facilities
R-L Low Density Residential	C-N Neighborhood Commercial	AG-80 General Agriculture	CONDITIONAL ZONING Conditional Zoning
R-M Medium Density Residential	C-G General Commercial	AG-160 General Agriculture	
R-MH Medium High Density Residential	C-C Community Commercial	AL-5 Limited Agriculture	
R-H High Density Residential	C-RS Rural Service Commercial	AL-10 Limited Agriculture	
<b>INDUSTRIAL</b>	C-R Recreation Commercial	AU-20 Agriculture Urban Reserve	<b>MIXED USE</b>
I-L Limited Industrial	C-L Limited Commercial	AI Agricultural Industrial	M-X Mixed Use
I-G General Industrial	C-X Crossroads Commercial		AP-X Airport Mixed Use
I-P Industrial Park			
I-W Warehouse Industrial			
I-T Truck Terminal			

## San Joaquin County, CA LINDEN-PETERS ZONING RECLASSIFICATION

APP NO.	ORDINANCE:	RESOLUTION:	ADOPTED
PA-2100227	4641	R-24-54	03/12/2024
PA-2100261	4639	R-24-25	02/06/2024
PA-2200021	N/A	R-24-115	05/21/2024
PA-2200278	4647	R-24-111	03/21/2024
PA-2300135	4678	R-24-112	05/21/2024
PA-2300143	4659	R-24-216	11/12/2024
PA-2400483	4680	R-25-127	08/12/2025



**San Joaquin County  
Geographic Information System**  
1810 East Hazelton Avenue Stockton, California 95205  
The information on this map is for general information purposes only. The County of San Joaquin does not warrant its accuracy, completeness or suitability for any particular purpose. The information should not be relied upon without field verification.  
Sources: Esri, TomTom, Garmin, FAO, NOAA, USGS, © OpenStreetMap contributors, and the GIS User Community  
Printed on 4/3/2026 8:46 AM by bwiddle



# ZONING