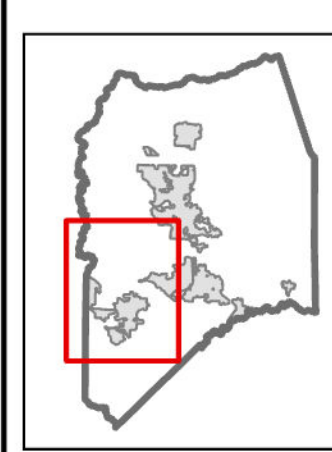


AGRICULTURAL		COMMERCIAL		OPEN SPACE		BOUNDARIES	
	A/L Limited Agriculture		C/N Neighborhood Commercial		OS/PR Open Space Parks Recreation		Incorporated Areas
	A/G General Agriculture		C/C Community Commercial		OS/RC Open Space Resource Conservation		Community Boundary
	A/UR Urban Reserve Agriculture		C/G General Commercial				
	A/I Industrial Agriculture		C/O Office Commercial				
RESIDENTIAL			C/R Commercial Recreation	MULTIPLE USE		CIRCULATION	
	R/R Rural Residential		C/RS Rural Service Commercial		AP/X Airport/Multi-Use		Interstate
	R/VL Very Low Density Residential		C/FS Freeway Service Commercial		M/X Mixed/Use		Freeway
	R/L Low Density Residential	INDUSTRIAL					Principal Arterial
	R/LM Residential Low & Medium Density		I/L Limited Industrial				Major Collector
	R/M Medium Density Residential		I/T Truck Terminals				Minor Arterial
	R/MH Medium High Residential		I/G General Industrial				Minor Collector
	R/H High Density Residential		I/W Warehouse Industrial				Rail Road
		PUBLIC					
			P/F Public Facilities or Services				

San Joaquin County, CA TRACY GENERAL PLAN AMMENDMENTS

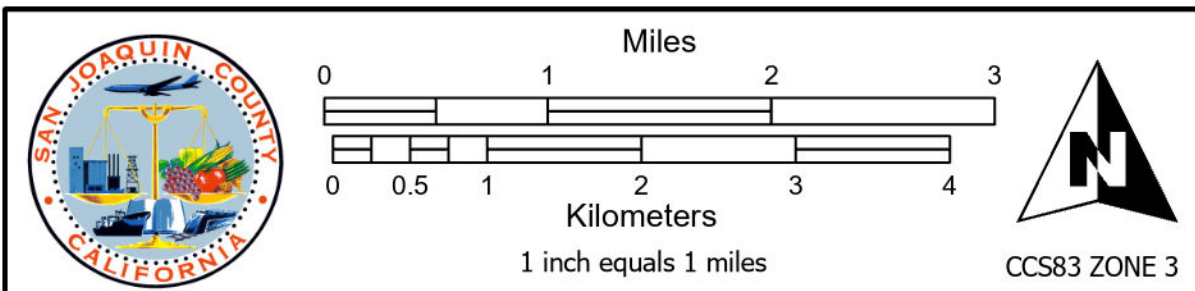
APP NO:	BOARD ORDER:	RESOLUTION:	ADOPTION DATE:
PA-2100198	R-25-22	R-23-171	01/25/2022
PA-2200131	R-23-117	R-24-54	09/13/2022
PA-2100168	R-23-140	R-24-115	06/06/2023
PA-2200030	R-24-54	R-24-111	07/25/2023
PA-2300135	R-24-115	R-24-112	03/12/2024
PA-2300143	R-24-111	R-24-216	05/21/2024
PA-2200277	R-24-112		05/21/2024
PA-2000217	R-24-112		05/21/2024
PA-2100261	R-24-216		11/12/2024



**San Joaquin County
Geographic Information System**
44 N San Joaquin Street Suite 230, Stockton, CA 95202

The information on this map is for general information purposes only. The County of San Joaquin does not warrant its accuracy, completeness or suitability for any particular purpose. The information should not be relied upon without field verification.

Printed Date: 4/3/2026 Created: bwaddle



GENERAL PLAN