

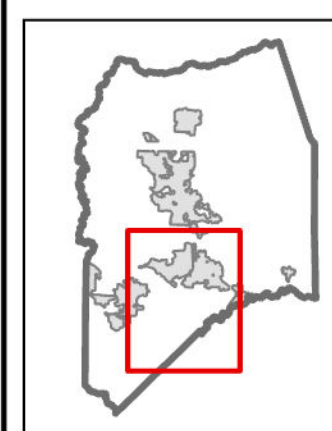
AGRICULTURAL	COMMERCIAL	OPEN SPACE	BOUNDARIES	
A/L Limited Agriculture	C/N Neighborhood Commercial	OS/PR Open Space Parks Recreation	Incorporated Areas	
A/G General Agriculture	C/C Community Commercial	OS/RC Open Space Resource Conservation	Community Boundary	
A/UR Urban Reserve Agriculture	C/G General Commercial			
A/I Industrial Agriculture	C/O Office Commercial			
RESIDENTIAL	C/R Commercial Recreation	MULTIPLE USE	CIRCULATION	
R/R Rural Residential	C/R/S Rural Service Commercial	AP/X Airport/Multi-Use	Interstate	
R/VL Very Low Density Residential	C/FS Freeway Service Commercial	M/X Mixed/Use	Freeway	
R/L Low Density Residential			Principal Arterial	
R/LM Residential Low & Medium Density	INDUSTRIAL		Major Collector	
R/M Medium Density Residential	I/L Limited Industrial	<th>PUBLIC</th>	PUBLIC	Minor Arterial
R/MH Medium High Residential	I/T Truck Terminals	P/F Public Facilities or Services	Minor Collector	
R/H High Density Residential	I/G General Industrial		Rail Road	
	I/W Warehouse Industrial			

San Joaquin County, CA

LATHROP-MANTECA

GENERAL PLAN AMMENDMENTS

APP NO:	BOARD ORDER:	RESOLUTION:	ADOPTION DATE:
PA-2100198	R-25-22	R-25-22	01/25/2022
PA-2200031	R-23-171	R-23-171	09/13/2022
PA-2100168	R-23-117	R-23-117	06/06/2023
PA-2200030	R-23-140	R-23-140	07/25/2023
PA-2300135	R-24-54	R-24-54	03/12/2024
PA-2300143	R-24-115	R-24-115	05/21/2024
PA-2200277	R-24-111	R-24-111	05/21/2024
PA-2000217	R-24-112	R-24-112	05/21/2024
PA-2100261	R-24-216	R-24-216	11/12/2024

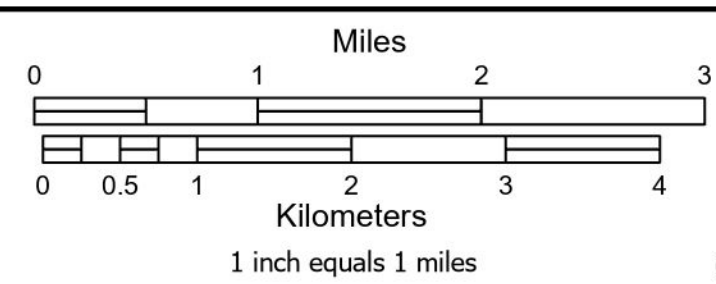


San Joaquin County
Geographic Information System
44 N San Joaquin Street Suite 230, Stockton, CA 95202

The information on this map is for general information purposes only. The County of San Joaquin does not warrant its accuracy, completeness or suitability for any particular purpose. The information should not be relied upon without field verification.



Printed Date: 4/3/2026 Created: bwaddle



GENERAL PLAN