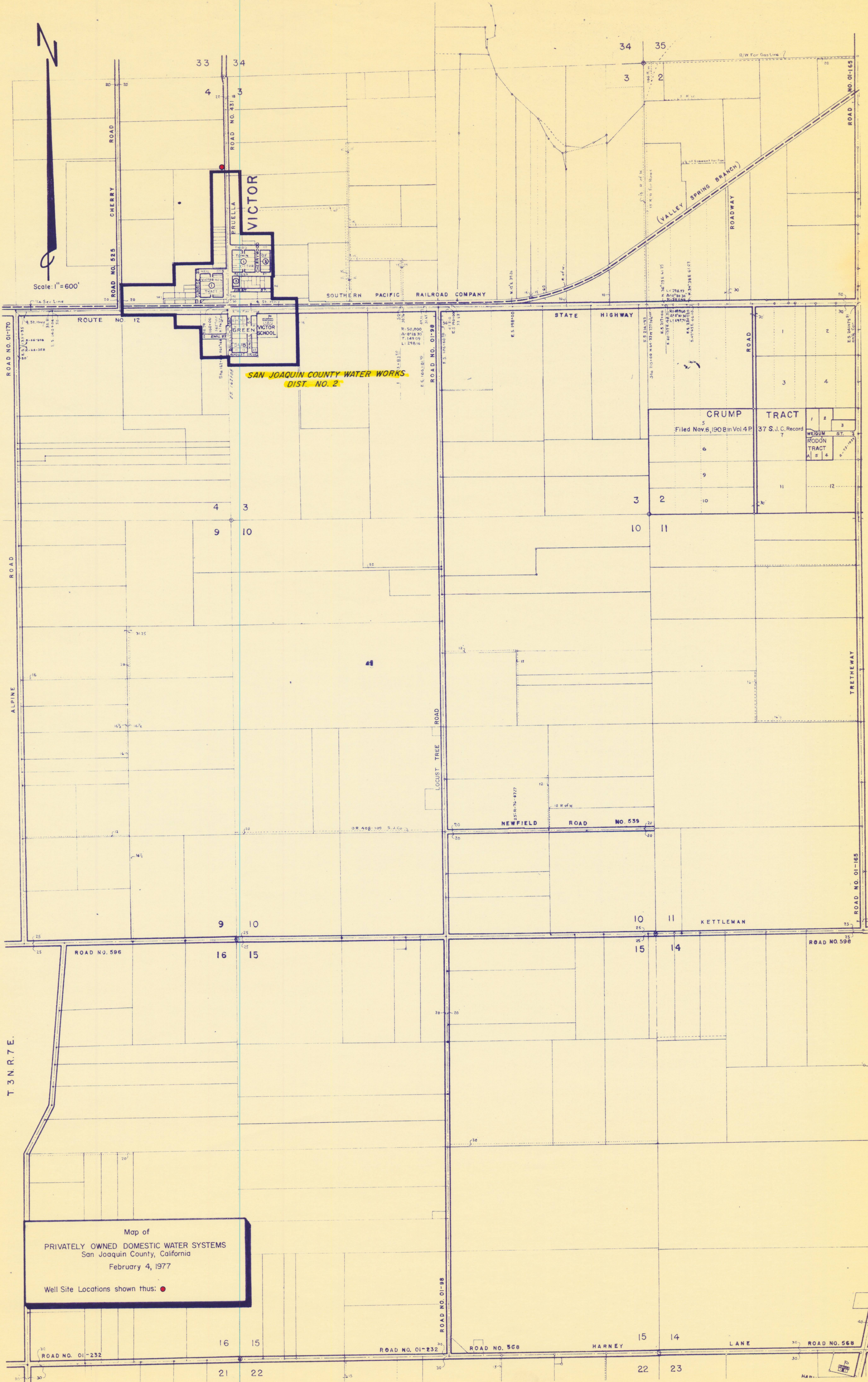




Scale: 1" = 600'



SAN JOAQUIN COUNTY WATER WORKS
DIST. NO. 2

CRUMP TRACT
Filed Nov. 6, 1908 in Vol 4 P
37 S. J. C. Record

WELGUM
RODÓN
TRACT
A 5 4

Map of
PRIVATELY OWNED DOMESTIC WATER SYSTEMS
San Joaquin County, California
February 4, 1977
Well Site Locations shown thus: ●