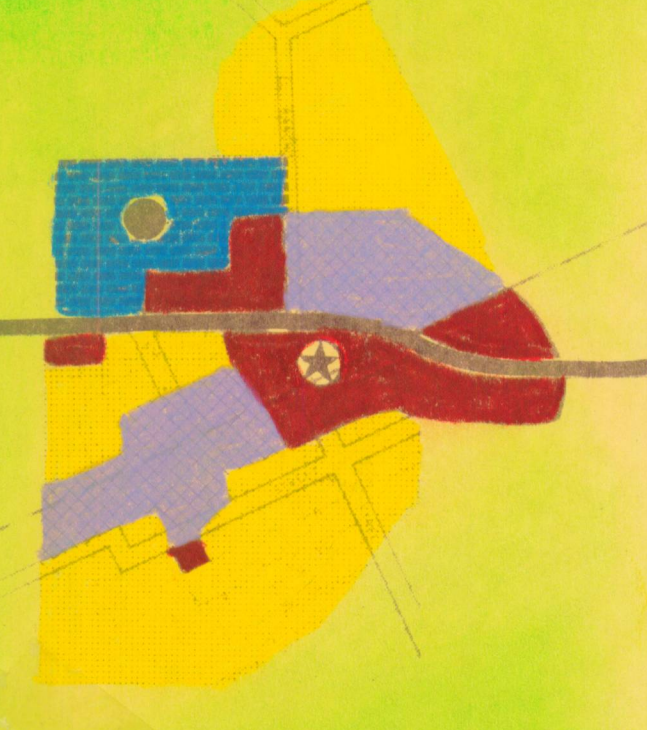
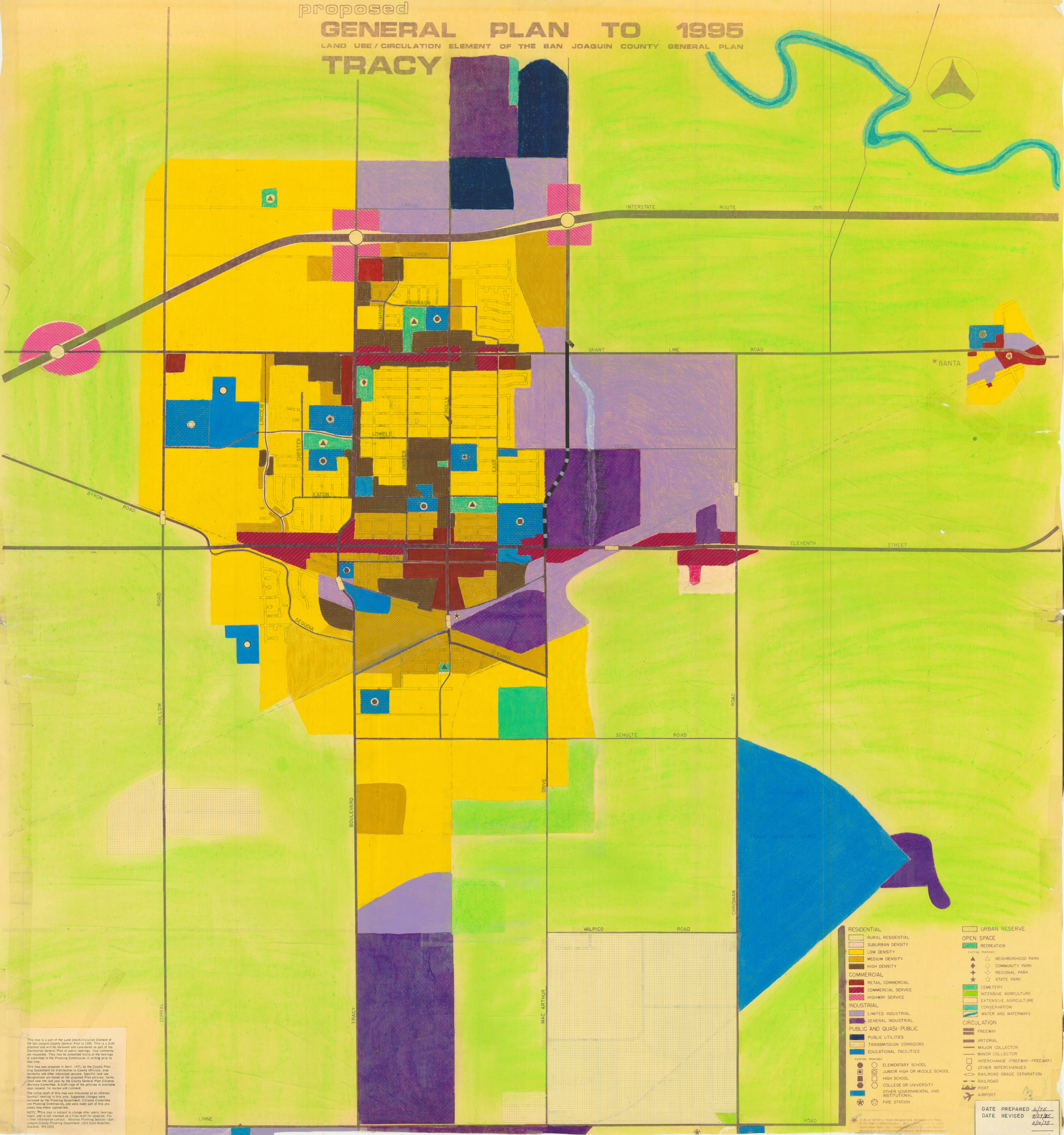
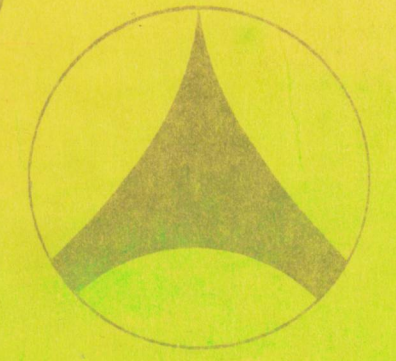


proposed
GENERAL PLAN TO 1995
 LAND USE / CIRCULATION ELEMENT OF THE SAN JOAQUIN COUNTY GENERAL PLAN
TRACY



This map is a part of the Land Use/Circulation Element of the San Joaquin County General Plan to 1995. This is a draft proposal and will be reviewed and considered as part of the Countywide General Plan at public hearings. Your comments are requested. They may be presented orally at the hearings or submitted to the Planning Commission in writing prior to that time.

This map was prepared in April, 1975, by the County Planning Department for distribution to County officials, area residents and other interested persons. Specific land use designations are based on the proposed Plan policies, forms adopted over the last year by the County General Plan Citizens Advisory Committee. A staff copy of the policies is available upon request for review and comment.

The initial draft of this map was discussed at an informal (unofficial) hearing in this area. Suggested changes were reviewed by the Planning Department, Citizens Committee and Planning Commission, and were made part of this proposed map where appropriate.

NOTE: This map is subject to change after public hearings held, and is not intended as a final draft for adoption. For further information contact: Advance Planning Section, San Joaquin County Planning Department, 1813 East Hazelton, Stockton, 95213.

RESIDENTIAL	URBAN RESERVE
<ul style="list-style-type: none"> RURAL RESIDENTIAL SUBURBAN DENSITY LOW DENSITY MEDIUM DENSITY HIGH DENSITY 	<ul style="list-style-type: none"> RECREATION
COMMERCIAL	OPEN SPACE
<ul style="list-style-type: none"> RETAIL COMMERCIAL COMMERCIAL SERVICE HIGHWAY SERVICE 	<ul style="list-style-type: none"> NEIGHBORHOOD PARK COMMUNITY PARK REGIONAL PARK STATE PARK CEMETERY INTENSIVE AGRICULTURE EXTENSIVE AGRICULTURE CONSERVATION WATER AND WATERWAYS
INDUSTRIAL	CIRCULATION
<ul style="list-style-type: none"> LIMITED INDUSTRIAL GENERAL INDUSTRIAL 	<ul style="list-style-type: none"> FREIGHTWAY ARTERIAL MAJOR COLLECTOR MINOR COLLECTOR INTERCHANGE (FREEWAY-FREEWAY) OTHER INTERCHANGES RAILROAD GRADE SEPARATION RAILROAD PORT AIRPORT
PUBLIC AND QUASI-PUBLIC	
<ul style="list-style-type: none"> PUBLIC UTILITIES TRANSMISSION CORRIDORS EDUCATIONAL FACILITIES 	
<ul style="list-style-type: none"> ELEMENTARY SCHOOL JUNIOR HIGH OR MIDDLE SCHOOL HIGH SCHOOL COLLEGE OR UNIVERSITY OTHER GOVERNMENTAL AND INSTITUTIONAL FIRE STATION 	

DATE PREPARED 6/75
 DATE REVISED 2/8/75
 4/10/75