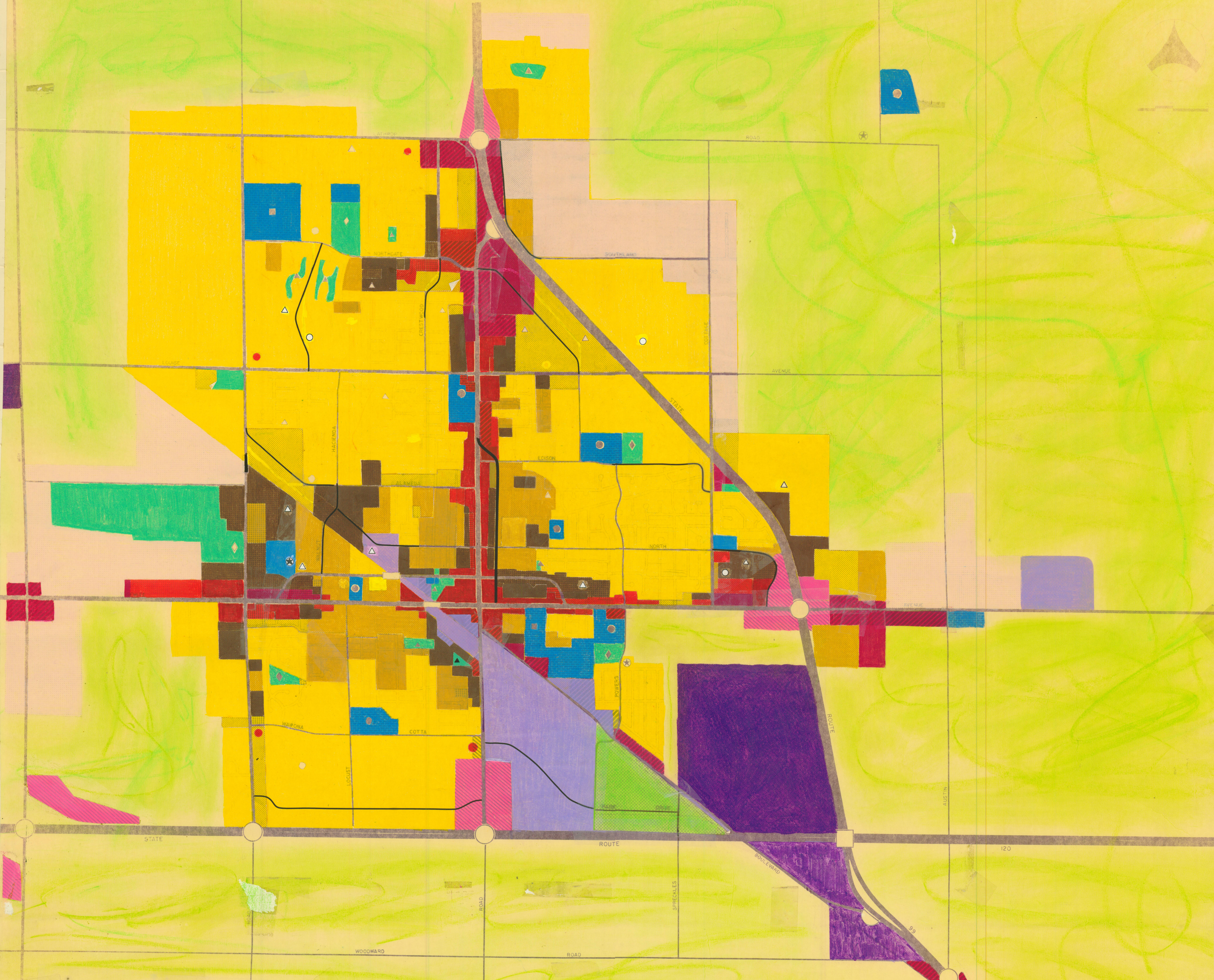


GENERAL PLAN TO 1995

LAND USE / CIRCULATION ELEMENT OF THE SAN JOAQUIN COUNTY GENERAL PLAN

MANTECA



- | | |
|--------------------------------------|-------------------------------|
| RESIDENTIAL | URBAN RESERVE |
| RURAL RESIDENTIAL | OPEN SPACE |
| SUBURBAN DENSITY | RECREATION |
| LOW DENSITY | EXISTING |
| MEDIUM DENSITY | NEIGHBORHOOD PARK |
| HIGH DENSITY | COMMUNITY PARK |
| COMMERCIAL | REGIONAL PARK |
| RETAIL COMMERCIAL | STATE PARK |
| COMMERCIAL SERVICE | AGRICULTURE |
| HIGHWAY SERVICE | CEMETERY |
| INDUSTRIAL | CONSERVATION |
| LIMITED INDUSTRIAL | WATER AND WATERWAYS |
| GENERAL INDUSTRIAL | CIRCULATION |
| PUBLIC AND QUASI-PUBLIC | FREEWAY |
| PUBLIC UTILITIES | ARTERIAL |
| TRANSMISSION CORRIDORS | MAJOR COLLECTOR |
| EDUCATIONAL FACILITIES | MINOR COLLECTOR |
| EXISTING / PROPOSED | INTERCHANGE (FREEWAY-FREEWAY) |
| ELEMENTARY SCHOOL | OTHER INTERCHANGES |
| JUNIOR HIGH OR MIDDLE SCHOOL | RAILROAD GRADE SEPARATION |
| HIGH SCHOOL | RAILROAD |
| COLLEGE OR UNIVERSITY | PORT |
| OTHER GOVERNMENTAL AND INSTITUTIONAL | AIRPORT |
| FIRE STATION | |

This map is a part of the Land Use/Circulation Element of the San Joaquin County General Plan to 1995. This is a draft proposal and will be reviewed and considered as part of the Countywide General Plan at public hearings. Your comments are requested. They may be presented orally at the hearings or submitted to the Planning Commission in writing prior to the time.

This map was prepared in April, 1975, by the County Planning Department for distribution to County officials, area residents and other interested persons. Specific land use designations are based on the proposed Plan policies formulated over the last year by the County General Plan Citizens Advisory Committee. A draft copy of the policies is available upon request, for review and comment.

The initial draft of this map was discussed at an informal overview meeting in this area. Suggested changes were reviewed by the Planning Department, Citizens Committee and Planning Commission, and were made part of this proposed map where appropriate.

NOTE: This map is subject to change after public hearings begin, and is not intended as a final draft for action. For further information contact: Advance Planning Section - San Joaquin County Planning Department, 1810 East Hazelton, Stockton, 95201.