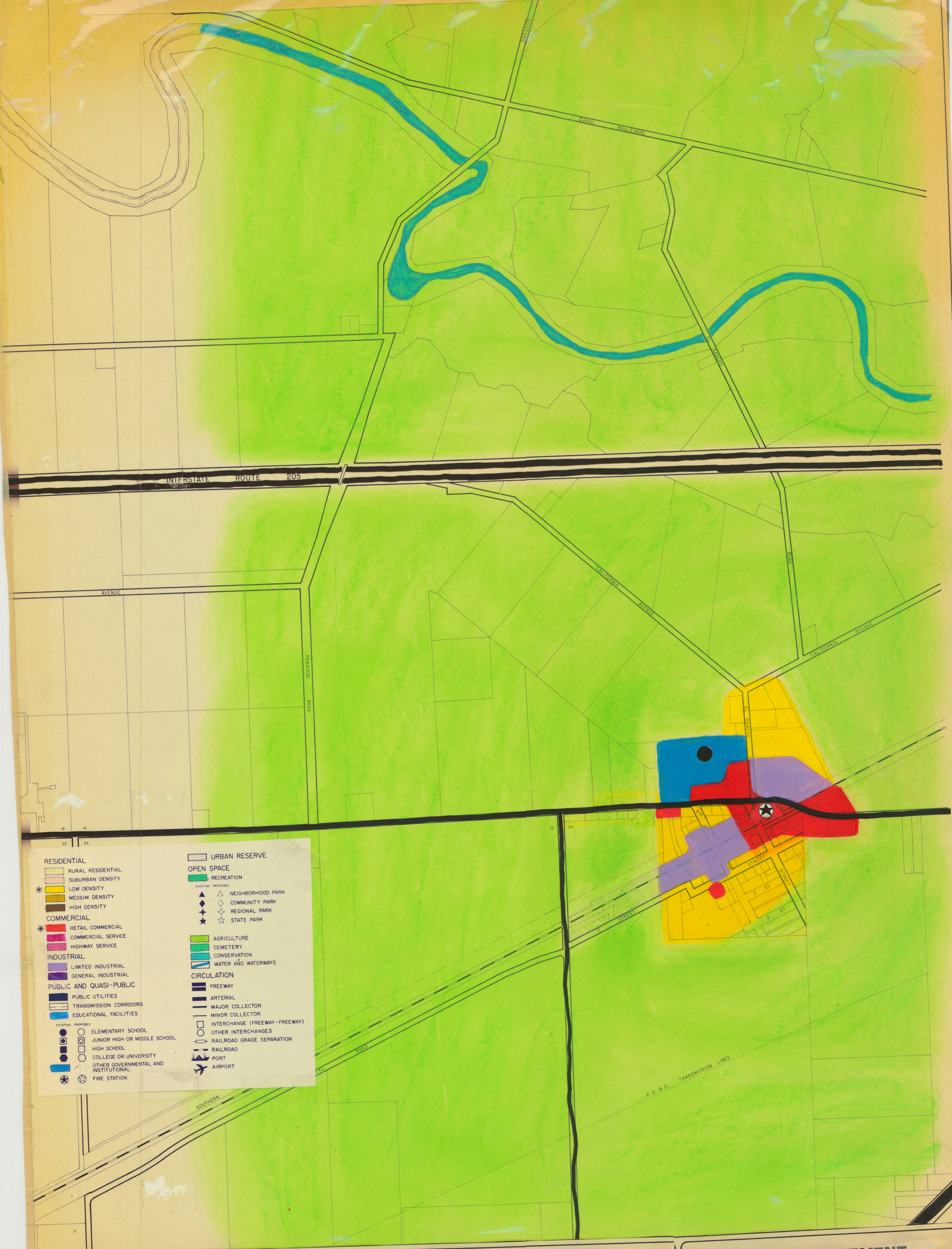


GENERAL PLAN TO 1995



RESIDENTIAL	URBAN RESERVE
<ul style="list-style-type: none"> RURAL RESIDENTIAL SUBURBAN DENSITY LOW DENSITY MEDIUM DENSITY HIGH DENSITY 	OPEN SPACE
COMMERCIAL	<ul style="list-style-type: none"> RECREATION NEIGHBORHOOD PARK COMMUNITY PARK REGIONAL PARK STATE PARK
<ul style="list-style-type: none"> RETAIL COMMERCIAL COMMERCIAL SERVICE HIGHWAY SERVICE 	<ul style="list-style-type: none"> AGRICULTURE CEMETERY CONSERVATION WATER AND WATERWAYS
INDUSTRIAL	CIRCULATION
<ul style="list-style-type: none"> LIMITED INDUSTRIAL GENERAL INDUSTRIAL 	<ul style="list-style-type: none"> FREEWAY ARTERIAL MAJOR COLLECTOR MINOR COLLECTOR INTERCHANGE (FREEWAY - FREEWAY) OTHER INTERCHANGES RAILROAD GRADE SEPARATION RAILROAD PORT AIRPORT
PUBLIC AND QUASI-PUBLIC	
<ul style="list-style-type: none"> PUBLIC UTILITIES TRANSMISSION CORRIDORS EDUCATIONAL FACILITIES 	
EXISTING PROPOSED	
<ul style="list-style-type: none"> ELEMENTARY SCHOOL JUNIOR HIGH OR MIDDLE SCHOOL HIGH SCHOOL COLLEGE OR UNIVERSITY OTHER GOVERNMENTAL AND INSTITUTIONAL FIRE STATION 	

BANTA SAN JOAQUIN COUNTY

PLANNING DEPARTMENT
SAN JOAQUIN COUNTY
STOCKTON, CALIFORNIA

