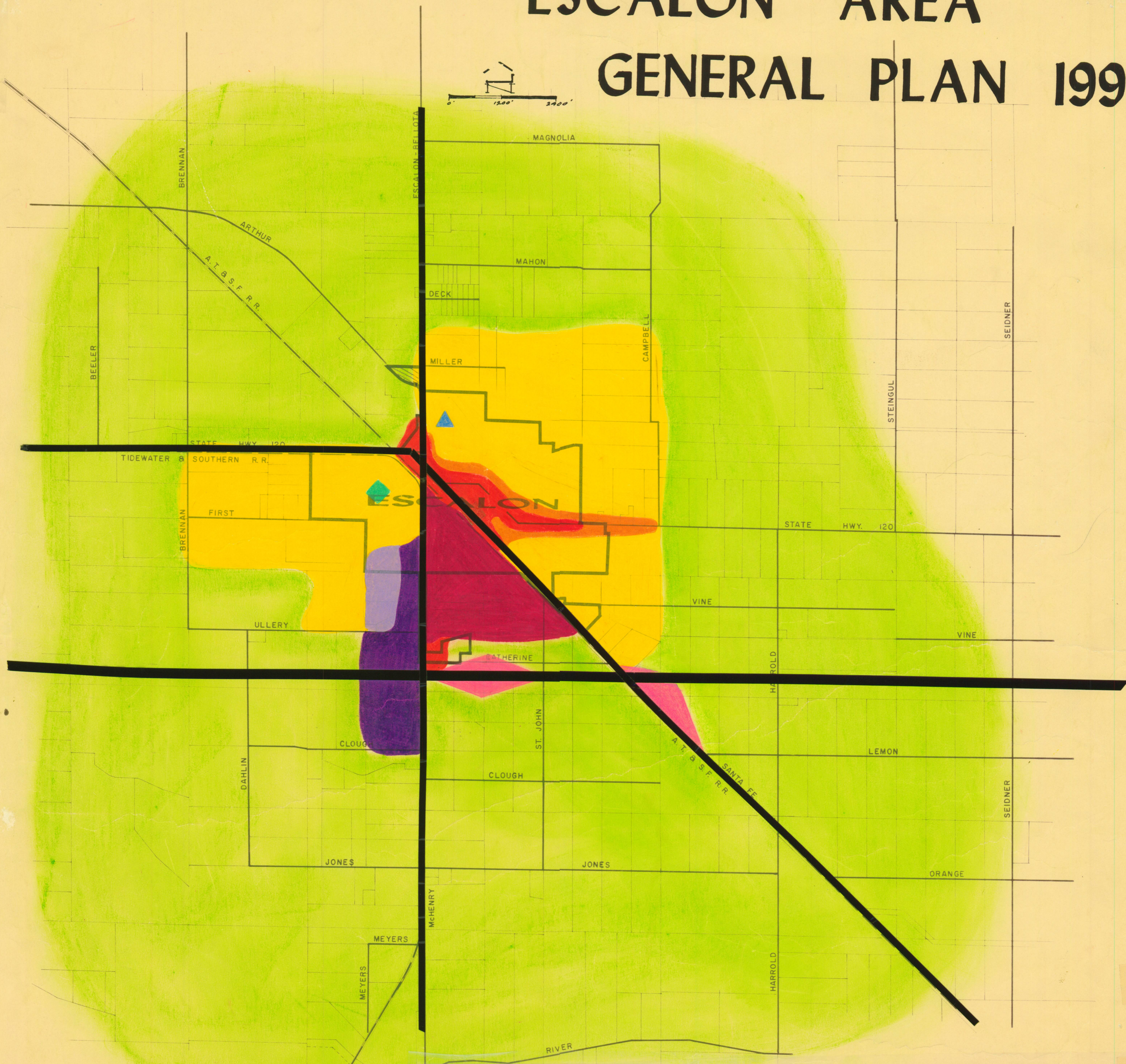
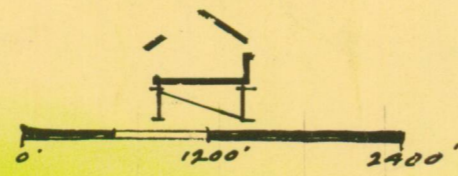


# ESCALON AREA

## GENERAL PLAN 1990



- |                                    |                                    |
|------------------------------------|------------------------------------|
| ○ RESIDENTIAL, SUBURBAN DENSITY    | ● CONSERVATION AREAS               |
| ○ RESIDENTIAL, LOW DENSITY         | ● WATER                            |
| ○ RESIDENTIAL, MEDIUM-HIGH DENSITY | ▲ HIGH SCHOOLS                     |
| ○ COMMUNITY SHOPPING CENTERS       | ● UNIVERSITIES AND JUNIOR COLLEGES |
| ● MAJOR RETAIL AND OFFICE AREAS    | ● INSTITUTIONAL USES               |
| ● GENERAL BUSINESS                 | ● MILITARY INSTALLATIONS           |
| ● HIGHWAY SERVICE AREAS            | ▬ FREEWAYS                         |
| ● RESTRICTIVE LIGHT INDUSTRIAL     | ○ SCENIC FREEWAYS                  |
| ● GENERAL INDUSTRIAL               | ▬ ARTERIALS                        |
| ● INDUSTRIAL RESERVE               | ○ RECREATION ROADS                 |
| ● AGRICULTURE                      | — RAILROAD                         |
| ● FOOTHILL PASTURE                 | ✈ AIRPORT                          |
| ● COMMUNITY PARK                   | ⚓ PORT                             |
| ● RECREATION                       |                                    |

708.45  
 Recommended for adoption by the San Joaquin County Planning Commission on May 1, 1969 by RESOLUTION NO. PC-31-69  
 Adopted by the San Joaquin County Board of Supervisors on May 29, 1969 by RESOLUTION NO. R-69-881

ATTEST: RALPH W. EPPERSON  
 County Clerk and Ex-officio  
 Clerk of the Board of Supervisors  
 of the County of San Joaquin,  
 State of California  
 by *Ralph Epperson*  
 Deputy Clerk

