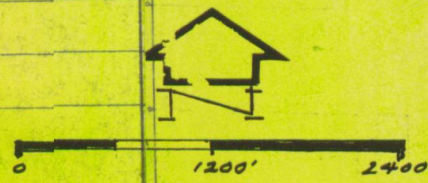


COLLIERVILLE AREA GENERAL PLAN 1990



- RESIDENTIAL, SUBURBAN DENSITY
- RESIDENTIAL, LOW DENSITY
- RESIDENTIAL, MEDIUM-HIGH DENSITY
- COMMUNITY SHOPPING CENTERS
- MAJOR RETAIL AND OFFICE AREAS
- GENERAL BUSINESS
- HIGHWAY SERVICE AREAS
- RESTRICTIVE LIGHT INDUSTRIAL
- GENERAL INDUSTRIAL
- INDUSTRIAL RESERVE
- AGRICULTURE
- FOOTHILL PASTURE
- COMMUNITY PARK
- RECREATION

- CONSERVATION AREAS
- WATER
- HIGH SCHOOLS
- UNIVERSITIES AND JUNIOR COLLEGES
- INSTITUTIONAL USES
- MILITARY INSTALLATIONS
- FREEWAYS
- SCENIC FREEWAY
- ARTERIALS
- RECREATION ROADS
- RAILROAD
- AIRPORT
- PORT

708.41
Recommended for adoption by the San Joaquin
County Planning Commission on May 1, 1969 by
RESOLUTION NO. PC-31-69
Adopted by the San Joaquin County Board of
Supervisors on May 29, 1969 by
RESOLUTION NO. R-69-881

RALPH W. EPPERSON
Clerk and Ex-officio
of the Board of Supervisors
County of San Joaquin,
California

Ralph W. Epperson
Deputy Clerk

726.007 A

