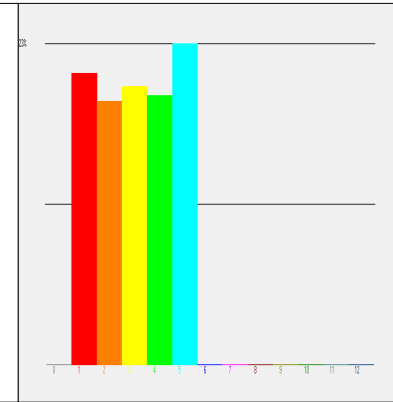


Dist	Total	White	Black	Amerind	Asian	Island	Other	Mixed	Hispanic
Unassig	0	0	0	0	0	0	0	0	0
District 1	115297	41738	14416	1839	15404	342	33424	8134	56922
District 2	104354	56475	7968	1172	17406	446	14199	6688	28405
District 3	110261	60035	8196	1048	20571	495	12441	7475	26209
District 4	106520	78394	1656	1025	4722	181	15667	4875	28386
District 5	127166	90965	5453	1293	6180	491	15882	6902	32151
District 6	0	0	0	0	0	0	0	0	0
District 7	0	0	0	0	0	0	0	0	0
District 8	0	0	0	0	0	0	0	0	0
District 9	0	0	0	0	0	0	0	0	0
District 10	0	0	0	0	0	0	0	0	0
District 11	0	0	0	0	0	0	0	0	0
District 12	0	0	0	0	0	0	0	0	0
District 13	0	0	0	0	0	0	0	0	0
District 14	0	0	0	0	0	0	0	0	0



Redistricting 2000 - Existing Conditions

San Joaquin County Geographic Information Systems
1810 East Hazelton Avenue, Stockton, CA 95205

The information on this map is based on the most current information available to San Joaquin County Geographic Information Systems.
The County of San Joaquin does not warrant its accuracy or suitability for any particular purpose.
The information on this map is not intended to replace engineering, financial or primary records research.



1" = 40,221'
(approximate)